

DUO

INSTILLATION NPWT THE LATEST ADDITION TO THE GENADYNE RANGE.

USED ON **PRESSURE ULCER IN KUALA LUMPUR**

Duo is an easy to use pre-programmed **Negative Pressure Wound Therapy Device (NPWT)** if required with everything supplied in one pack no necessity for extra canisters or tubing.

Negative Pressure Wound Therapy with instillation is fast becoming a therapy of choice where problematic wounds are not responding to traditional **NPWT**.

There is a growing trend of complex wounds which respond to this therapy supported by an international consensus written in 2019 (Kim et al); who developed a document supporting this therapy using the only available instillation pump at that time.

Today newer pumps with touch control have a precision and easy programmable front screen to enabling ease of use in home care settings, not just the hospital environment, Training is easily accessible for both nurses and doctors ensuring care is always given at the optimum.

Instillation fluids vary around the world, the most important decision of the clinician is to look at their outcomes then decide if the fluid they are using will provide this in their selected soak time.

Treating a Pressure Ulcer with **DUO** Instillation **NPWT**

“A pressure ulcer is localised damage to the skin and/or underlying tissue, usually over a bony prominence (or related to a medical or other device), resulting from sustained pressure (including pressure associated with shear).” N.I.C.E 2023.

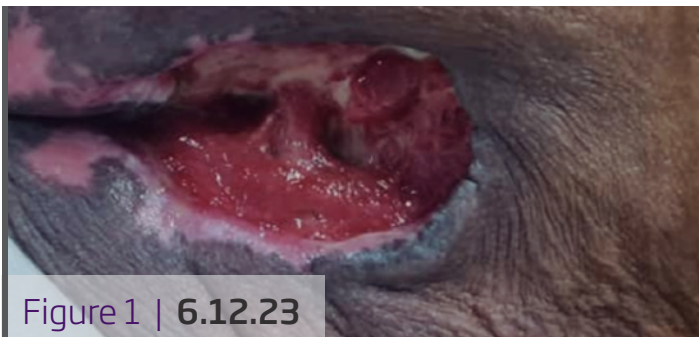


Figure 1 | 6.12.23

Note depth, darkened granulation. therapy Instillation of normal saline 20 ml every 2 hours maintained at 125mmhg

Pressure ulcers can vary in severity and are classified with different tools around the world. The severity depends upon multiple factors including age, malnutrition and mobility.

This case study from K.L is part of a large scale evaluation being undertaken on different complex wounds under the direction of Professor Harikrishna Raga.

The patient is a 71-year-old male with a history of hypertension who underwent a MVA (manual vacuum aspiration) with closed right midshaft femur fracture who developed a lower limb deep vein thrombosis causing delirium and sepsis.

Fractures of this nature can be life threatening and may include hemorrhage, internal organ injury, wound infection, fat embolism, and acute respiratory distress syndrome.

Following this experience, he developed a pressure ulcer Stage 3. Duo was applied to stimulate new granulation prior to the patient going home.

Picture 1 highlights the wound before Instillation therapy, picture 2 highlights the wound following one weeks therapy and removed for discharge. Instillation therapy is often prescribed to get the required results within a 1-2 week treatment time.

References: National Institute for health and care excellence pressure ulcers revision 2023. United Kingdom. Negative pressure wound therapy with instillation: International consensus guidelines. Paul J. Kim. Christopher E. Attinger. Thomas Constantine. Brett D. Crist. Elizabeth Faust. Christoph R. Hirche. Lawrence A. Lavery. Valerie J. Messina. Norihiko Ohura. Laurie J. Punch. Garrett A. Wirth. Ibbi Younis. Luc Tétot Int

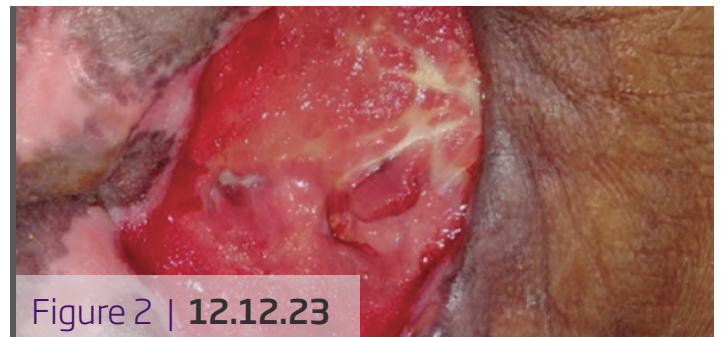


Figure 2 | 12.12.23

Note healthy granulation with uniform growth of tissue covering the wound bed. Exudate reduced, wound cleaned with 2 cycles of instillation therapy.